

TO BE READ WITH THIS OFFICE
 DRAWING NO: 3-76-00
 DATED: 11-10-2022

PROJECT ARCHITECTS:
rajeev agarwal architects
 www.rajeevagarwal.com
 011-40526848
 011-40526849

STRUCTURE:
NNC DESIGN INTERNATIONAL
NNC CONSULTING STRUCTURAL ENGINEERS
 100, 3rd Floor, P.L.E. Park
 Sector 17, Gurgaon, Haryana - 122002
 www.nncdesign.com
 011-42283012

MEP CONSULTANTS:
PDA
 100, 3rd Floor, P.L.E. Park
 Sector 17, Gurgaon, Haryana - 122002
 www.pdaengg.com
 011-42283012

PROJECT LANDSCAPE CONSULTANTS:
Greenbox Designs
 P-123, DLF City Phase 2
 Gurgaon
 Haryana, India

PROJECT TITLE:
REVISED Building Plans of Group Housing Colony
 Area Measuring 27.48725 Acres
 License No. 85 of 2013 Dated 08.08.2013
 License No. 85 of 2014 Dated 08.08.2014 in Sector-36-A,
 Gurgaon Manesar Urban Complex Being Developed By
BLUEJAYS REALTECH PVT. LTD.
 Being Codeveloped By
(KRISUMI CORPORATION PVT. LTD.)

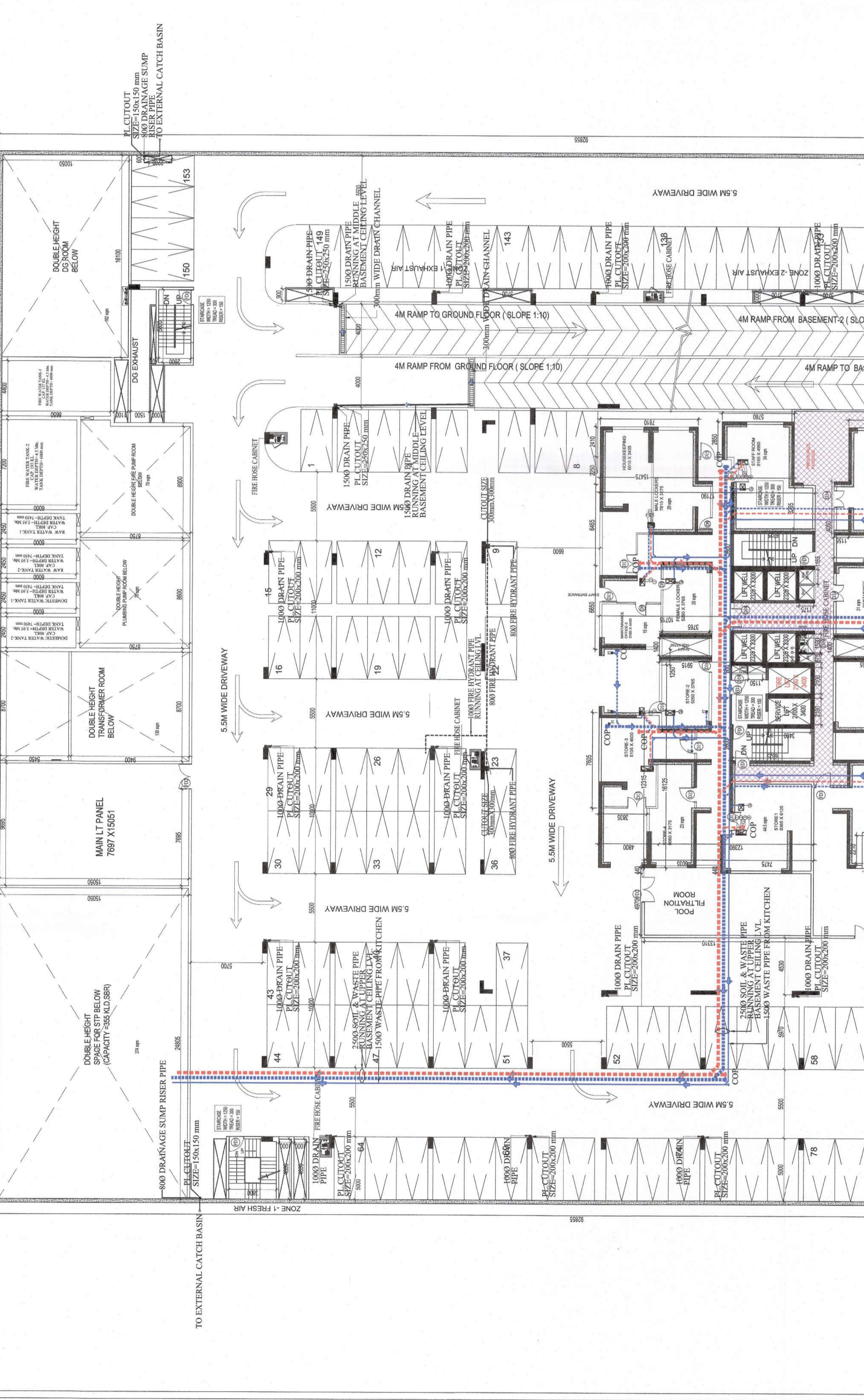
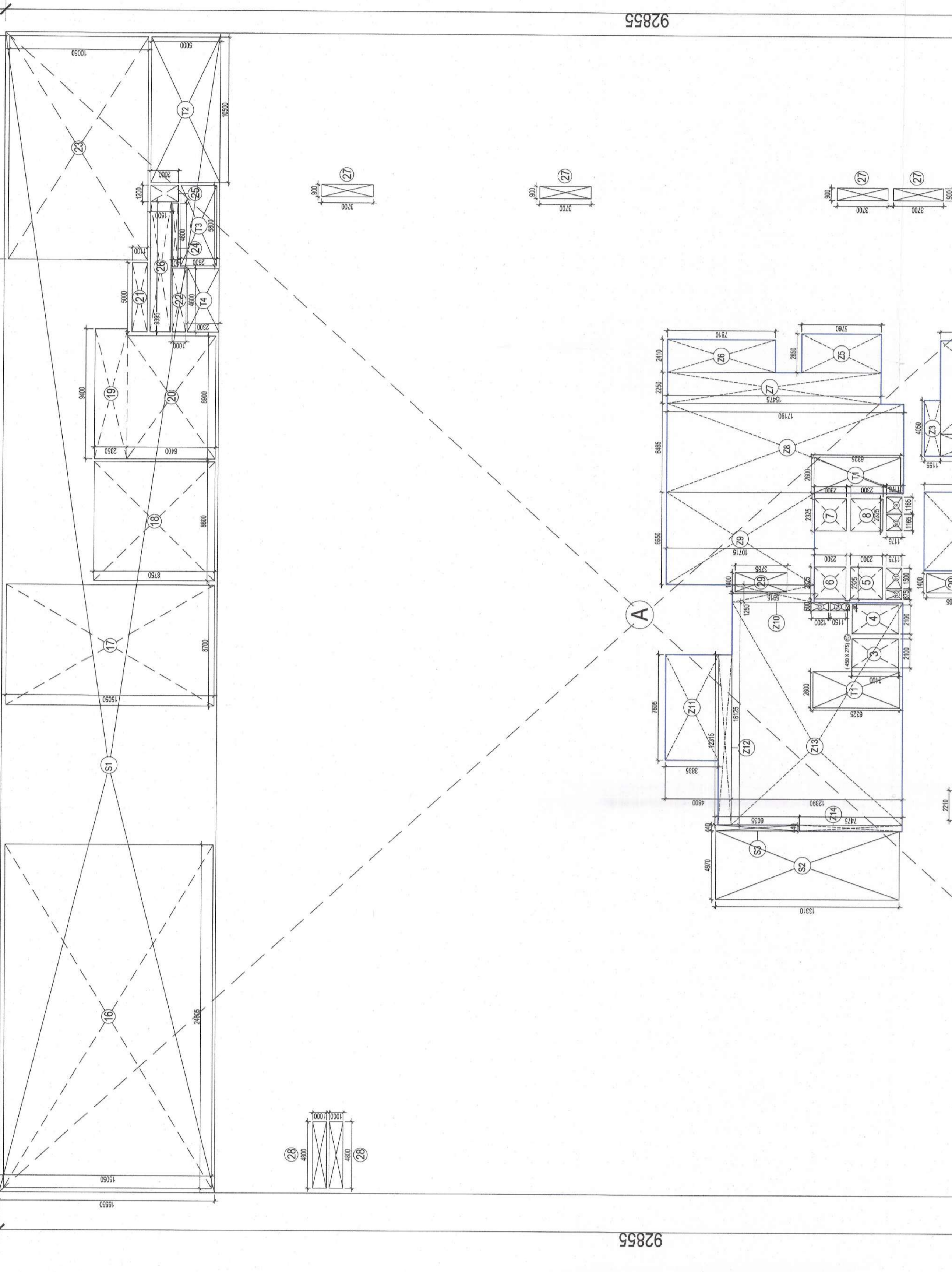
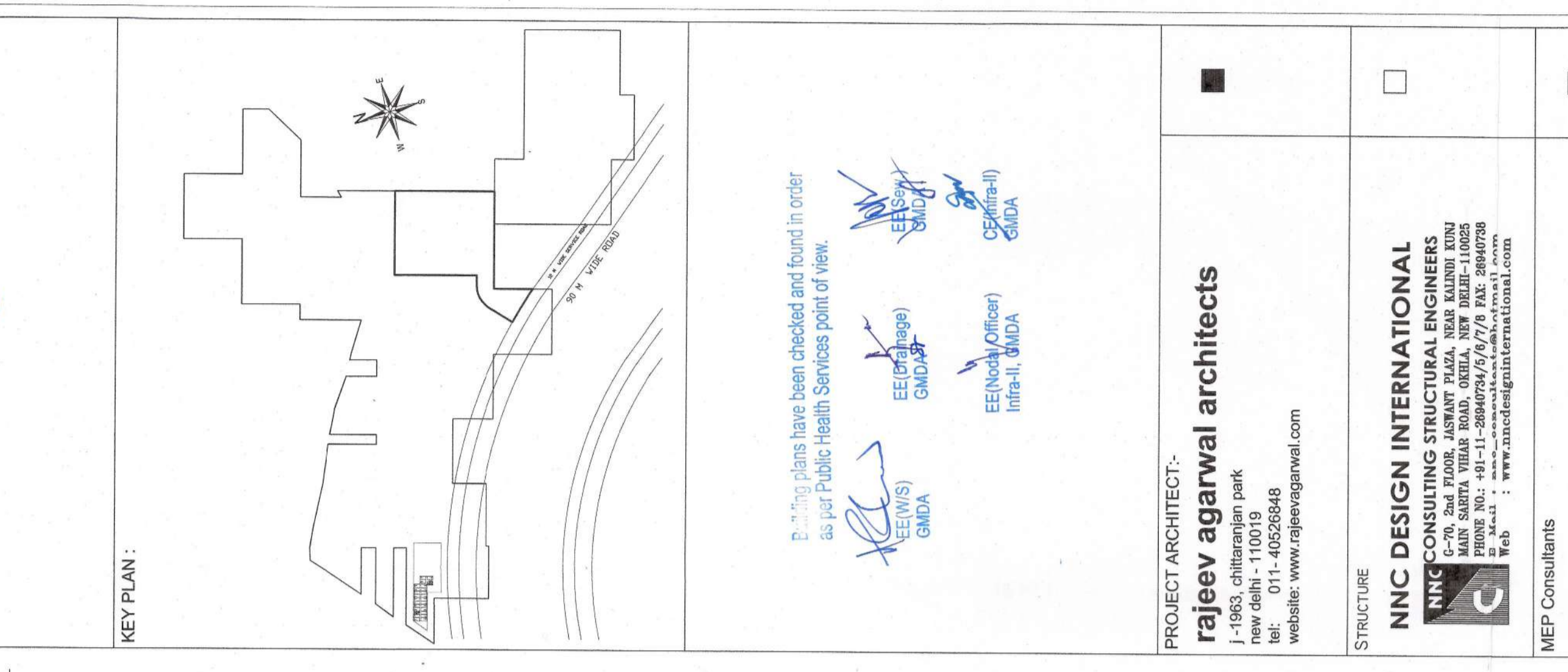
ARCHITECT'S SIGNATURE / STAMP:
 RAJEEV AGARWAL
 ARCHITECT C/468/11915

STRUCTURE CONSULTANT SIGNATURE / STAMP:
 OWNER SIGNATURE / STAMP:
 PDA

DRAWING TITLE:
**TOWER - 1A
 BASEMENT-1**

SCALE: 1:200 (A0)
 DATE: 08 - JUNE - 2022
 DRAWING NO. BS-1

RELEASED FOR:
 INFORMATION
 EIA
 TENDER
 ADVANCE COPY
 SUBMISSION DRG.
 GFC



PLUMBING LEGEND

SYMBOL	DESCRIPTION
○	1000 WASTE & VENT PIPE
○	750 VENT PIPE
○	400DN TAKE DOMESTIC WATER SUPPLY FOR KITCHEN
○	400DN TAKE DOMESTIC WATER SUPPLY 20TH TO 21TH FLOOR
○	400DN TAKE DOMESTIC WATER SUPPLY 10TH TO GROUND FLOOR
○	400DN TAKE HOT WATER SUPPLY 10TH TO GROUND FLOOR
○	400DN TAKE HOT WATER RETURN 33TH TO GROUND FLOOR
○	500DN DOMESTIC WATER SUPPLY RISER
○	110mm OD HDPE RAIN WATER PIPE FOR TERRACE
○	160mm OD HDPE RAIN WATER PIPE FOR BALCONY
○	FLOOR DRAIN
○	CUTOUT SIZE 150x150mm

PIPE CONNECTION DIA. -

PIPE DIA.	CONNECTION DIA.
100	100
150	150
200	200
250	250
300	300
350	350
400	400
450	450
500	500
550	550
600	600
650	650
700	700
750	750
800	800
850	850
900	900
950	950
1000	1000

DOOR & WINDOW SCHEDULE

S. NO.	DOOR / WINDOW	SIZE (mm)	QTY	UNIT PRICE	TOTAL VALUE
1	DOOR	2000x2400	2	161.80	323.60
2	DOOR	2000x2400	2	161.80	323.60
3	DOOR	2000x2400	2	161.80	323.60
4	DOOR	2000x2400	2	161.80	323.60
5	DOOR	2000x2400	2	161.80	323.60
6	DOOR	2000x2400	2	161.80	323.60
7	DOOR	2000x2400	2	161.80	323.60
8	DOOR	2000x2400	2	161.80	323.60
9	DOOR	2000x2400	2	161.80	323.60
10	DOOR	2000x2400	2	161.80	323.60
11	DOOR	2000x2400	2	161.80	323.60
12	DOOR	2000x2400	2	161.80	323.60
13	DOOR	2000x2400	2	161.80	323.60
14	DOOR	2000x2400	2	161.80	323.60
15	DOOR	2000x2400	2	161.80	323.60
16	DOOR	2000x2400	2	161.80	323.60
17	DOOR	2000x2400	2	161.80	323.60
18	DOOR	2000x2400	2	161.80	323.60
19	DOOR	2000x2400	2	161.80	323.60
20	DOOR	2000x2400	2	161.80	323.60
21	DOOR	2000x2400	2	161.80	323.60
22	DOOR	2000x2400	2	161.80	323.60
23	DOOR	2000x2400	2	161.80	323.60
24	DOOR	2000x2400	2	161.80	323.60
25	DOOR	2000x2400	2	161.80	323.60
26	DOOR	2000x2400	2	161.80	323.60
27	DOOR	2000x2400	2	161.80	323.60
28	DOOR	2000x2400	2	161.80	323.60
29	DOOR	2000x2400	2	161.80	323.60
30	DOOR	2000x2400	2	161.80	323.60
31	DOOR	2000x2400	2	161.80	323.60
32	DOOR	2000x2400	2	161.80	323.60
33	DOOR	2000x2400	2	161.80	323.60
34	DOOR	2000x2400	2	161.80	323.60
35	DOOR	2000x2400	2	161.80	323.60
36	DOOR	2000x2400	2	161.80	323.60
37	DOOR	2000x2400	2	161.80	323.60

BUILDUP AREA OF BASEMENT-1

LEGEND	LENGTH (m)	WIDTH (m)	NO.	AREA (sqm)
ADDITIONS				
A	83.800	92.855	1	7781.248
TOTAL ADDITIONS				7781.248
SUBTRACTIONS				
1	2.100	2.100	1	4.410
2	2.100	2.100	1	4.410
3	2.100	2.100	1	4.410
4	2.100	2.100	1	4.410
5	2.100	2.100	1	4.410
6	2.100	2.100	1	4.410
7	2.100	2.100	1	4.410
8	2.100	2.100	1	4.410
9	2.100	2.100	1	4.410
10	2.100	2.100	1	4.410
11	2.100	2.100	1	4.410
12	2.100	2.100	1	4.410
13	2.100	2.100	1	4.410
14	2.100	2.100	1	4.410
15	2.100	2.100	1	4.410
16	2.100	2.100	1	4.410
17	2.100	2.100	1	4.410
18	2.100	2.100	1	4.410
19	2.100	2.100	1	4.410
20	2.100	2.100	1	4.410
21	2.100	2.100	1	4.410
22	2.100	2.100	1	4.410
23	2.100	2.100	1	4.410
24	2.100	2.100	1	4.410
25	2.100	2.100	1	4.410
26	2.100	2.100	1	4.410
27	2.100	2.100	1	4.410
28	2.100	2.100	1	4.410
29	2.100	2.100	1	4.410
30	2.100	2.100	1	4.410
31	2.100	2.100	1	4.410
32	2.100	2.100	1	4.410
33	2.100	2.100	1	4.410
34	2.100	2.100	1	4.410
35	2.100	2.100	1	4.410
36	2.100	2.100	1	4.410
37	2.100	2.100	1	4.410
TOTAL SUBTRACTION				559.975
TOTAL AREA				8272.274

PAR AREA OF BASEMENT-1

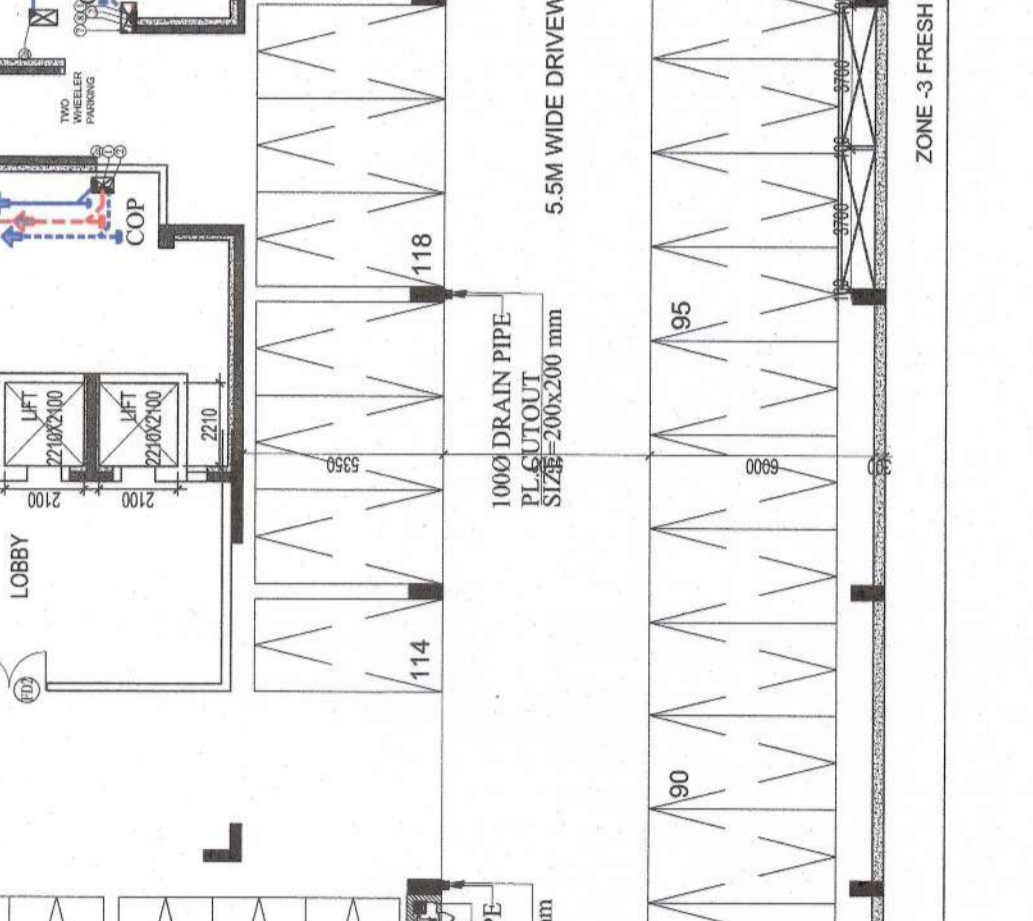
LEGEND	LENGTH (m)	WIDTH (m)	NO.	AREA (sqm)
ADDITIONS				
21	6.810	2.810	1	19.136
22	4.050	1.550	1	6.278
23	4.050	1.550	1	6.278
24	5.950	2.495	1	14.852
25	2.410	2.810	1	6.772
26	2.410	2.810	1	6.772
27	2.250	18.475	1	41.471
28	6.650	10.715	1	71.263
29	1.250	3.915	1	4.904
30	1.250	3.915	1	4.904
31	12.315	0.965	1	11.884
32	16.125	12.300	1	198.789
33	0.445	7.475	1	3.328
TOTAL ADDITIONS				599.654
SUBTRACTIONS				
1	2.800	0.325	2	32.800
2	2.100	3.400	1	7.140
3	2.100	3.400	1	7.140
4	0.800	1.200	1	0.960
5	1.150	0.600	1	0.690
6	1.150	0.600	1	0.690
7	1.400	3.765	1	5.271
TOTAL SUBTRACTION				55.975
TOTAL AREA				543.679

SERVICE AREA BASEMENT-1

LEGEND	LENGTH (m)	WIDTH (m)	NO.	AREA (sqm)
ADDITIONS				
S1	53.800	15.500	1	833.900
S2	15.500	6.000	1	93.000
S3	0.440	0.635	1	0.279
TOTAL ADDITIONS				927.179
SUBTRACTIONS				
S4	5.000	5.000	1	25.000
S5	15.500	2.100	1	32.550
TOTAL SUBTRACTION				57.550
TOTAL AREA				869.629

AREA CALCULATION FOR CAR PARKING OF BASEMENT -1:

TOTAL COVERED AREA OF UPPER BASEMENT = 8272.274 sqm
 TOTAL PARKING AREA OF UPPER BASEMENT = 8272.274 x 0.15 = 1240.841 sqm
 PROVISION OF CAR PARKING = 4987.95532 = 155 CARS
 PROPOSED CAR PARKING AT UPPER BASEMENT = 153 CARS



UPPER BASEMENT PLAN
 SCALE 1:200